

Load break switches

for specific applications

Despite already offering a wide range of load break switches, SOCOMEC also manufactures specific products to suit any requirement. Some of these products can be seen on these two pages. This list is not exhaustive.

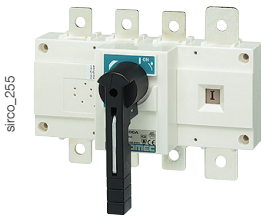
Please do not hesitate to contact us.

Compliance with standards

- > IEC 60947-3
- > BS EN 60947-3
- > EN 60947-3
- > NBN EN 60947-3
- > VDE 0660-107 (1992)



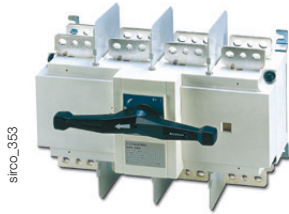
SIRCO range with overrated neutral



The use of power electronics is becoming more and more frequent. Chopper, rectifiers and current inverters distort the signal by reinjecting the 3rd order harmonics which are combined in the neutral. Range available from 125 to 1800 A.

SIRCO 3 x 250 A with 400 A rated neutral

SIRCO high short-circuit withstand



- 80 kA rms 1 s.
- 110 kA rms 0.1 s.
- 240 kA peak.

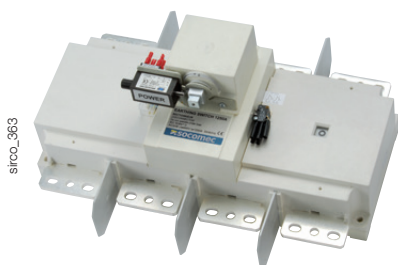
SIRCO early break AC



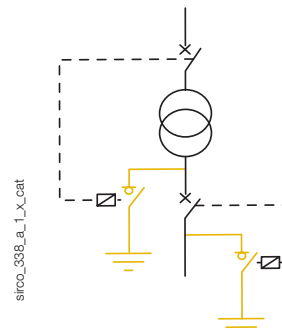
- Complete range from 125 to 3200 A.
- Double positive break indication given through a position indication window, located directly on the product, and by the operating handle.
- Features an early break auxiliary contact as standard.
- Severe load duty categories (AC-22 and AC-23).
- High resistance to damp heat (supplied "tropicalised").

SIRCO 3 x 1250 A with early prebreak AC

SIRCO for earthing



- From 800 to 1800 A.
- 50 kA rms 1 s.
- Special S4 type handle.
- Undervoltage coil interlocking.



Remotely operated load break switches

SIRCO MOT AT



Function

SIRCO MOT AT are remotely operated 3/4 pole load break switches. They make and break under load conditions and provide safety isolation for any low voltage electrical circuit. This is ensured via volt-free contacts using either a pulse or contactor logic.

Advantages

- **Extended power range**
These products offer great flexibility thanks to a wide power supply range of 208 to 277 VAC $\pm 20\%$.
- **Integrated auxiliary contacts**
As part of the product monitoring function, the SIRCO MOT AT enables the transmission of information relating to their position. This is possible thanks to the standard integration of an auxiliary contact for each position.

General characteristics

- 2 stable positions (I, 0).
- One auxiliary contact per position as standard.
- Positive break indication
- AUT/MAN selector.
- Manual emergency operation.
- Padlocking in position 0 (position I optional).
- Ratings: from 125 to 3200 A.

References

Rating (A)		125	160	250	400	630	800
No. of poles	Power supply voltage	Reference	Reference	Reference	Reference	Reference	Reference
3 P	230 VAC	9915 3012	9915 3016	9915 3025	9915 3040	9915 3063	9915 3080
4 P	230 VAC	9915 4012	9915 4016	9915 4025	9915 4040	9915 4063	9915 4080

Rating (A)		1000	1250	1600	2000	2500	3200
No. of poles	Power supply voltage	Reference	Reference	Reference	Reference	Reference	Reference
3 P	230 VAC	9915 3100	9915 3120	9915 3160	9915 3200	9915 3250	9915 3320
4 P	230 VAC	9915 4100	9915 4120	9915 4160	9915 4200	9915 4250	9915 4320